



SWITCH

CONSTRUCTION	LOOP
PILE FIBER COMPOSITION	100% Solution Dyed Olefin
YARN TYPE	BCF
PILE WEIGHT	780 g/m <sup>2</sup>
NUMBER OF TUFTS	222780/m <sup>2</sup>
TUFTING GAUGE	1/12"
PRIMARY BACKING	Non-Woven
SECONDARY BACKING	Stablesield - 100% Vinyl
TILE SIZE	50 cm x 50 cm
PILE HEIGHT	4.0 mm / 5.0 mm
TOTAL PILE HEIGHT	7.5 mm
PILE TREATMENT	INVISTA Anti-Soil Treatment (Optional)
RECOMMENDED INSTALLATION	Quarter Turn



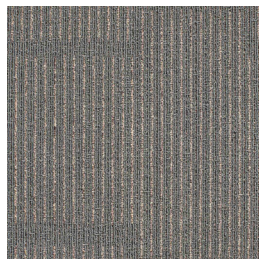
# SPECIFICATIONS



# COLOURLINE



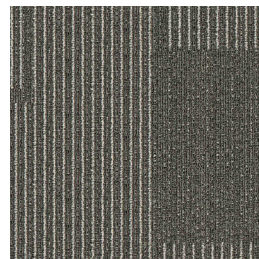
Switch 794



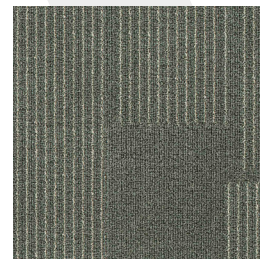
Switch 793



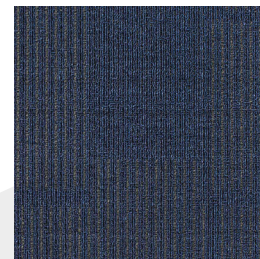
Switch 779



Switch 777



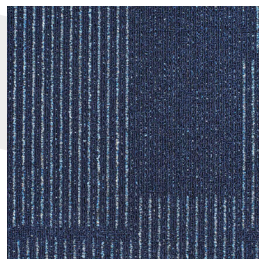
Switch 774



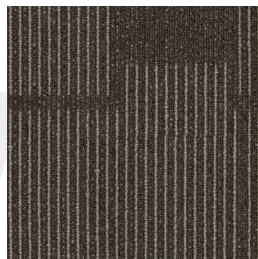
Switch 759



Switch 756



Switch 755



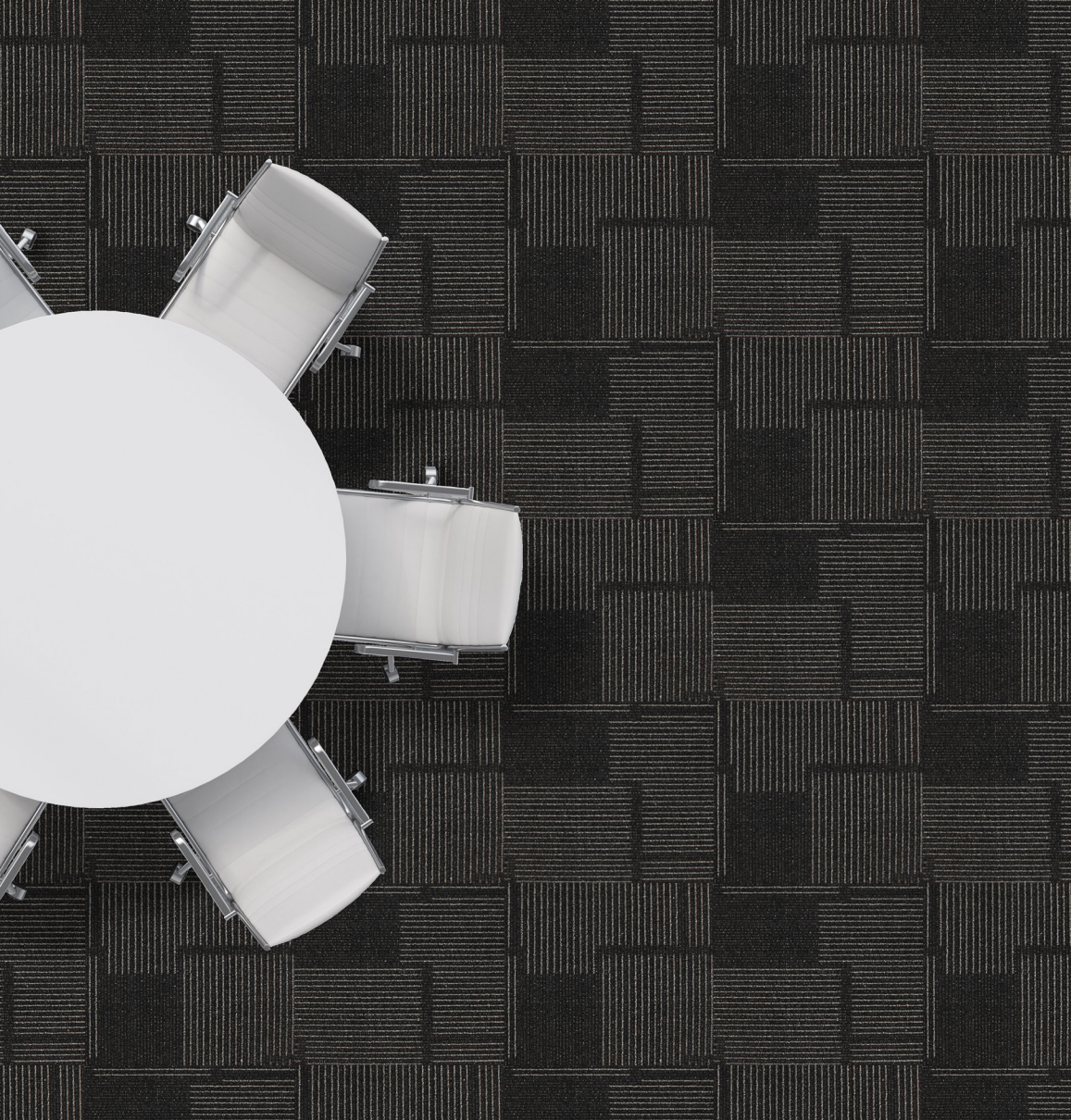
Switch 744



Switch 742



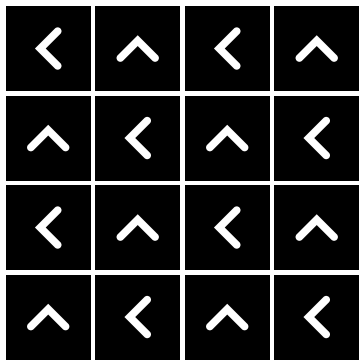
Standard  
CARPETS





# HOW TO INSTALL

## QUARTER TURN



Standard  
CARPETS



Standard  
*CARPETS*

[www.standardcarpets.com](http://www.standardcarpets.com)