


TAMWORTH





<b>CONSTRUCTION</b>	Loop
<b>PILE FIBER COMPOSITION</b>	100% Nylon (Polyamide 6)
<b>YARN TYPE</b>	CABLE
<b>DYE METHOD</b>	Solution Dyed
<b>PILE WEIGHT</b>	650g/m <sup>2</sup>
<b>NUMBER OF TUFTS</b>	209350/m <sup>2</sup>
<b>TUFTING GAUGE</b>	1/10"
<b>PRIMARY BACKING</b>	Non-Woven
<b>BACKING STRUCTURES</b>	Stable Shield - 100% Vinyl
<b>TILE SIZE</b>	50 cm x 50 cm
<b>PILE HEIGHT</b>	5.0 mm
<b>TOTAL HEIGHT</b>	8.0 mm
<b>PILE TREATMENT</b>	INVISTA Anti-Soil Treatment, Anti-Microbial (optional)
<b>RECOMMENDED INSTALLATION</b>	Quarter Turn or Brick

# SPECIFICATIONS

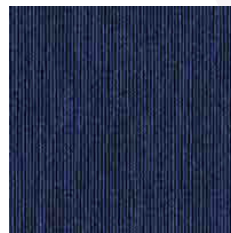
# COLOURLINE



TAMWORTH - 644



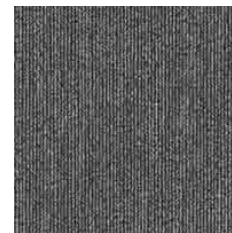
TAMWORTH - 650



TAMWORTH - 656



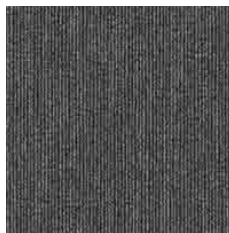
TAMWORTH - 658



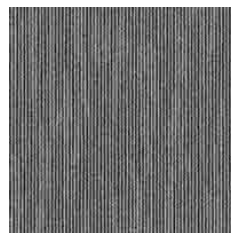
TAMWORTH - 670



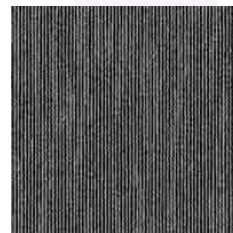
TAMWORTH - 671



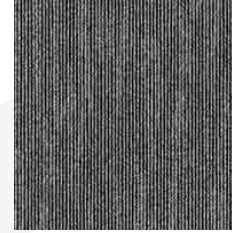
TAMWORTH - 673



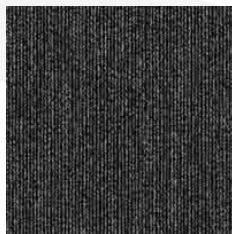
TAMWORTH - 675



TAMWORTH - 676



TAMWORTH - 677



TAMWORTH - 679



TAMWORTH - 692



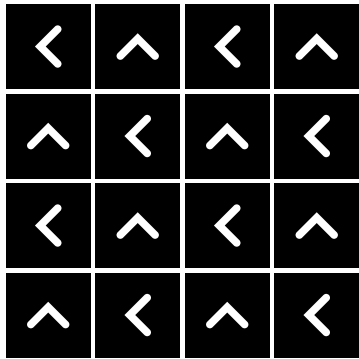
TAMWORTH - 693



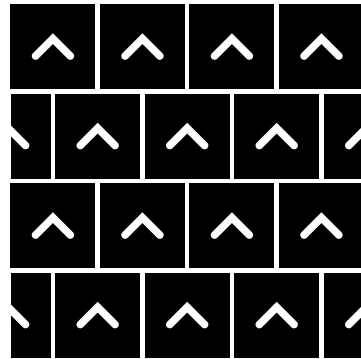


# HOW TO INSTALL

**QUARTER TURN**



**BRICK**





Standard  
*CARPETS*

[www.standardcarpets.com](http://www.standardcarpets.com)