

VULCAN

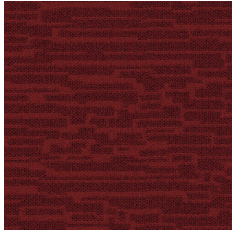


CONSTRUCTION	LOOP
PILE FIBER COMPOSITION	100% Solution Dyed Nylon (Polyamide 6)
YARN TYPE	BCF
PILE WEIGHT	750g/m2
NUMBER OF TUFTS	260700 /m2
TUFTING GAUGE	1/12"
PRIMARY BACKING	Non-Woven
BACKING STRUCTURES	Stable Shield 100% Vinyl
OPTIONAL BACKING	Recova-PU Cushion , Eco-Shield-100% Recycled Vinyl
TILE SIZE	50 cm x 50 cm
PILE HEIGHT	3.0 mm / 6.5 mm
TOTAL HEIGHT	8.5 mm
PILE TREATMENT	INVISTA Anti - Soil , Anti - Microbial (Optional)
RECOMMENDED INSTALLATION	Quarter Turn or Brick

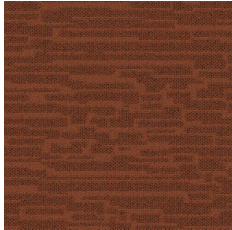


SPECIFICATIONS

COLOURLINE



VULCAN-724



VULCAN-730



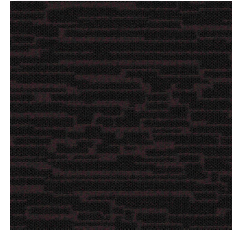
VULCAN-743



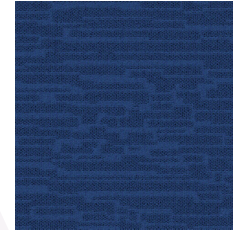
VULCAN-746



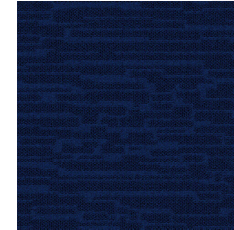
VULCAN-747



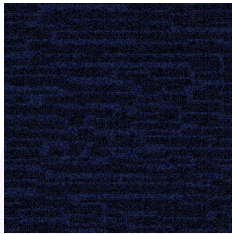
VULCAN-748



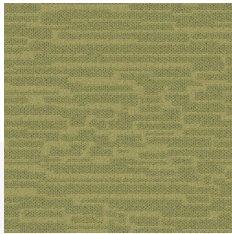
VULCAN-751



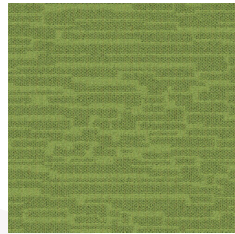
VULCAN-755



VULCAN-757



VULCAN-760



VULCAN-761



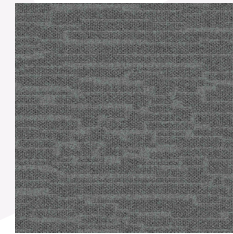
VULCAN-763



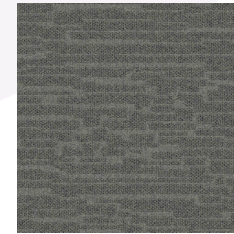
VULCAN-765



VULCAN-770



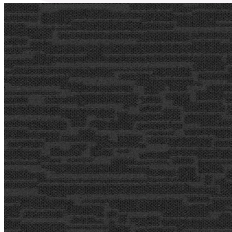
VULCAN-771



VULCAN-773



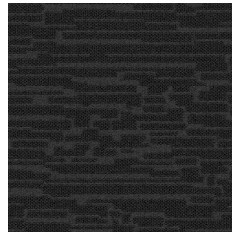
VULCAN-774



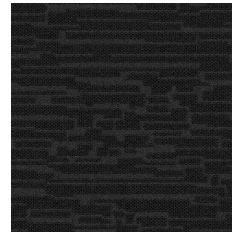
VULCAN-775



VULCAN-776



VULCAN-777



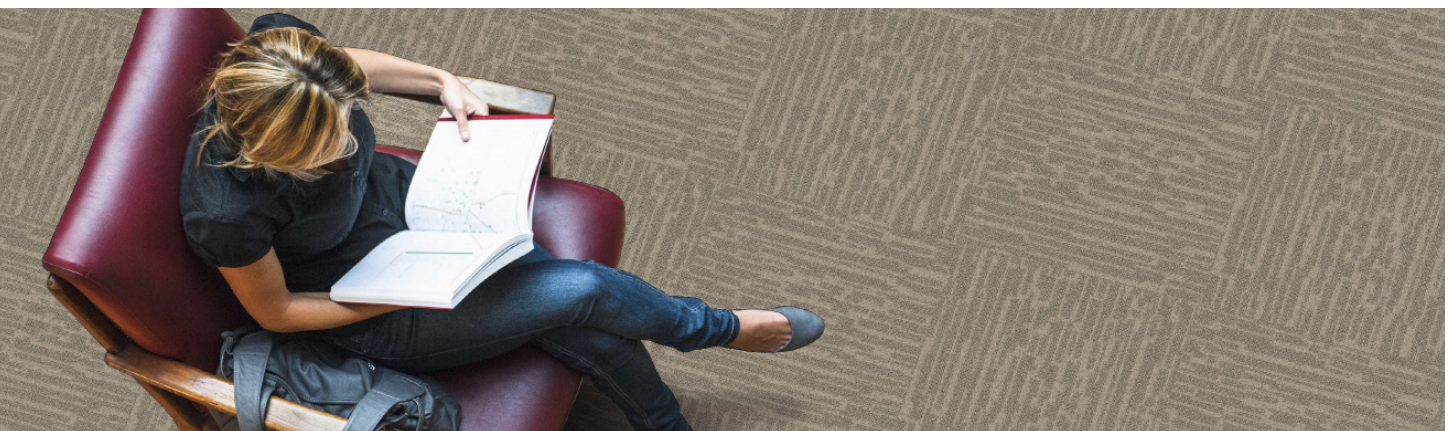
VULCAN-778



VULCAN-793



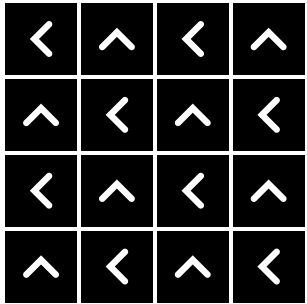
VULCAN-794



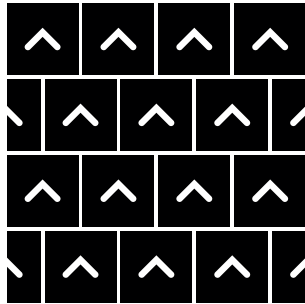


HOW TO INSTALL

QUARTER TURN
(tile)



BRICK
(tile)





Standard
CARPETS

www.standardcarpets.com